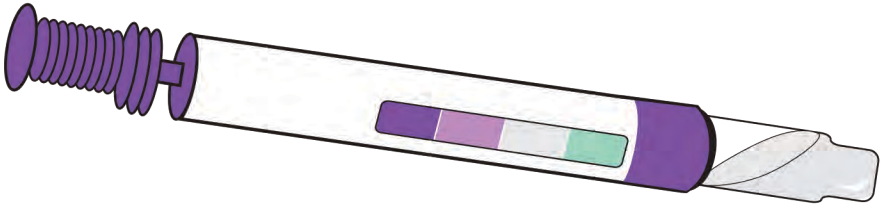
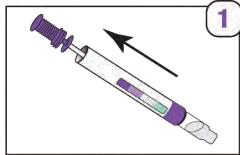


Instant Mold & Protein Test Swab

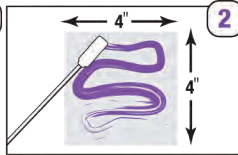


Contents: _____ swabs

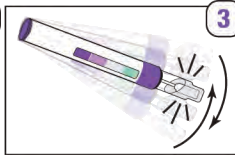
Easy to Use!



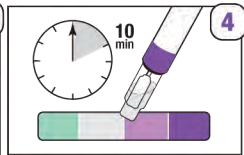
Remove the swab from the tube. If the test surface is dry, moisten the end of the swab with clean potable water.



Swab the test surface. Be sure to collect enough sample material by covering an area at least 4 inches square.



Put the swab back into the tube. Firmly press down the handle until swab snaps into solution chamber. Shake rapidly from side to side for at least 5 seconds.



Wait exactly 10 minutes for results. Compare the solution color against the Mold Test label. **"If it's GREEN it's Clean!"**

Intended use: This kit is intended as an initial screening tool to test a visible stain for the presence of a wide array of molds. This test does not distinguish between toxic and non-toxic species, nor is this test intended for use in the detection of "hidden molds." Additional sampling and laboratory analysis may be required to confirm results.